

## IMPORTANT

- Although light body and battery are water-resistant (under normal weather conditions of rain, etc.) never intentionally submerge them under water.
- The battery used in the WhiteLite™ HP Mega 10W is 3.7 volts. Never attempt to alter this lighting system. Never use this battery with any other lighting or electrical system.
- Never attempt to disassemble the battery.
- If battery pack is dropped, battery case may be cracked and a short circuit may occur. Replace battery pack immediately.
- The battery has unique characteristics. The light output will remain high until the battery runs down then drops suddenly. Always pay attention to the charge remaining and take precautions by carrying a spare battery.
- The battery charger is for indoor use only. After charging the battery, be sure to unplug it from the home power outlet.
- If the light body or parts become dirty, gently clean with a soft towel using mild soap and water. Never use harsh chemicals to clean the lighting system as damage to housings will occur.
- When connecting and disconnecting the plug and socket hold the connector ends only. Do not attempt to connect or disconnect the plug/socket interface by pushing or pulling on wires or serious damage to wires and connectors will occur.
- After long periods of non-use, the battery will lose charge. Always charge the battery fully before each use and storage. Maintain the battery by charging it every three months and storing it in a cool, dry place to prevent from decreasing its lifespan. 3 to 5 charging cycles are needed to attain full capacity after a long period of non-use.

## SPARE PARTS



Light Unit  
Art no. TMS-SP68



Battery Charger  
Art no. TMS-SP69



Battery Pack  
Art no. TMS-SP67



Helmet Mount Unit Art no. TMS-SP36



Rubber Strap Art no. TMS-SP06

## SPECIFICATIONS

**Bulb:** 10W LED, 900 Lumens (Max)

**Battery:** Lithium ion rechargeable battery 3.7 V 10400 mAh

Recharge/ Discharge Number of Times:

at least 300 (until rated capacity drops to 50%)

Operation Temperature: -20°C - 45°C (-4°F ~ 113°F)

Storage Temperature: -20°C - 60°C (-4°F ~ 140°F)

**Charger:**

Input: Voltage: AC 100-240V, 50/60Hz

Current: 0.7A Max

Output: Voltage: 4.2V DC

Current: 3A Max

Charging Time: 5~6 hours

Operating Temperature: 0°C ~ 40°C (32°F ~ 104°F)

Storage Temperature: -20°C ~ 60°C (-4°F ~ 140°F)

**Topeak products are available only from professional bicycle shops.**

Please contact your nearest Topeak authorized bicycle dealer for any questions.

For customers in the USA, call: 1-800-250-3068 Website: [www.topeak.com](http://www.topeak.com)

Copyright © Topeak, Inc. 2011

M-TMS060-GB 08/11

## WARNING

- Pacemaker users should never use this device.
- The light body becomes extremely hot when used for long periods of time. Never touch the body or lens until it has thoroughly cooled, otherwise injury may occur.
- Never look directly into the light when it's turned on. It may harm your vision.
- Do not use this light improperly on public roads. The light output is equal to automobile halogen bulbs. Adjust the light accordingly so as not to blind oncoming traffic.
- If the light unit, cord or battery pack is damaged, discontinue use immediately. A hazardous condition may result due to the high voltage system.
- Never short-circuit the terminals of the battery pack or the plug of the components.
- Safely and properly dispose of the old Li-ion batteries according to your local regulations.
- Never place this lighting system within a child's reach.
- Use only the supplied battery charger for this system.
- Night riding is inherently more dangerous than daylight riding. For your safety and the safety of others, Topeak asks that you use extreme caution when using this or any other light source while riding at night.
- Stay alert and ride safely while using your WhiteLite™ HP Mega 10W.
- If the lighting system turns off automatically, DO NOT attempt to turn on the lighting system again, or damage and/or decreased battery life may occur.

Serial No.:

Register your light system at  
[www.topeak.com](http://www.topeak.com)

## WARRANTY

1-Year Warranty: All mechanical components (light body, covers, mounts and fasteners) against manufacturer defects only.

90-day Warranty: All batteries and chargers against manufacturer defects only.

60-day Warranty: All bulbs against manufacturer defects only.

### Warranty Claim Requirements

To obtain warranty service, you must have your original sales receipt. Systems returned without a sales receipt will assume that the warranty begins on the date of manufacture. All warranties will be void if lighting system is damaged due to rider crash, abuse, system alteration, modification, or used in any way not intended as outlined in this operating manual.

\*The specifications and design are subject to change without notice.



## WhiteLite™ HP Mega 10W

## User's Guide

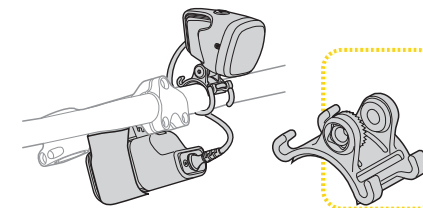
WhiteLite™ HP Mega 10W is equipped with standard mounting parts for Handlebar, Battery and Helmet. Please read all instructions before first use.

Battery: Li-ion 3.7 V

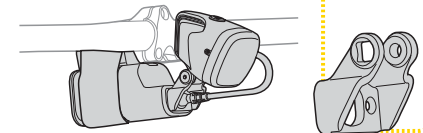


### MOUNTING POSITION

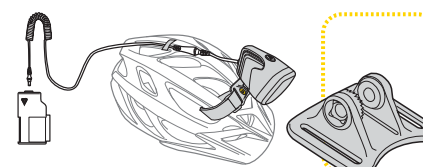
#### 1 Mount on Handlebar



#### 2 Mount on Battery



#### 3 Mount on Helmet

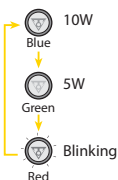


### Power Controller



Press and hold for  
3 seconds  
to turn on or off

### Power Level Indication

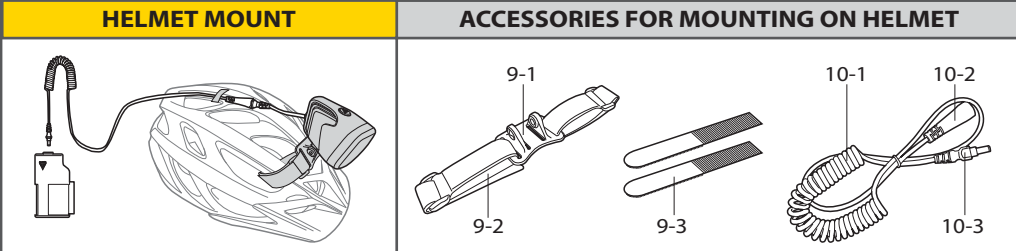
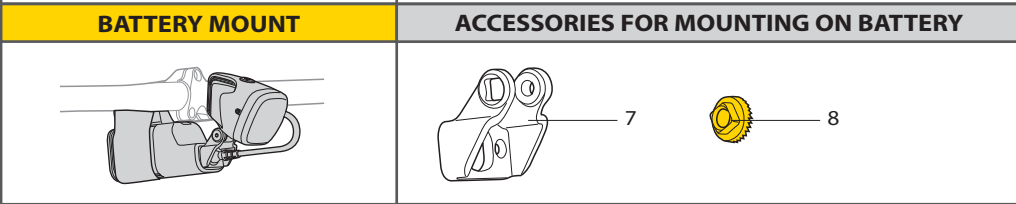
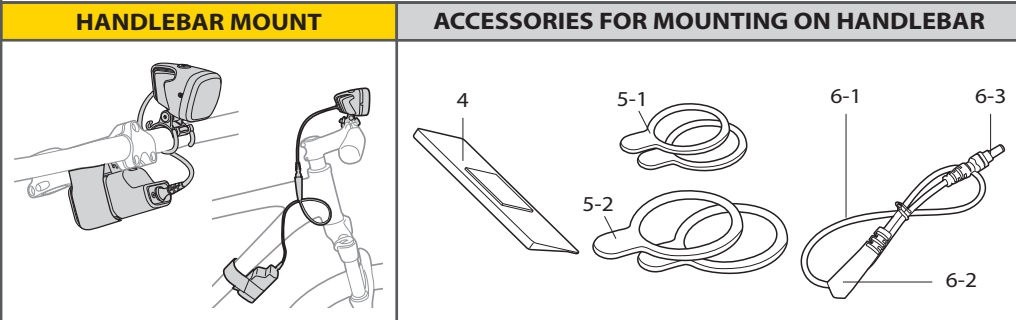
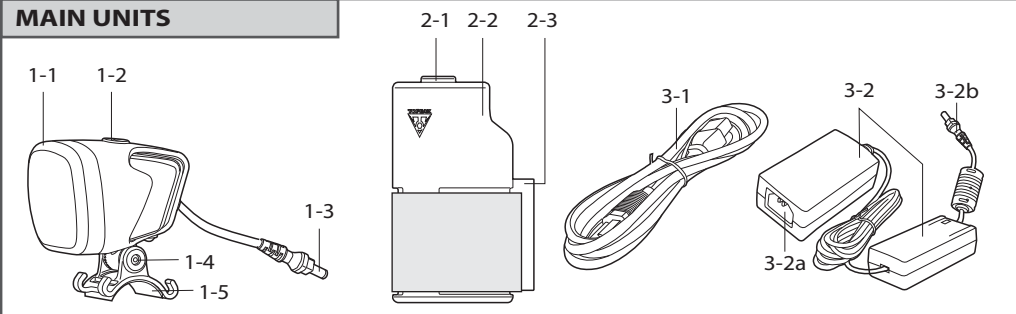


Thank you for purchasing the Topeak WhiteLite™ HP Mega 10W. Designed for high performance night cycling. This is a unique high power 3.7 volt lighting system. Before operating, thoroughly familiarize yourself with this manual so that you understand the light's safe and correct operation. Please keep this manual for further reference.

**Before first use, the battery pack must be fully charged. (Please follow the instructions on BATTERY PACK CHARGING.) When the battery pack has not been used for a long period, operating time will shorten due to self-discharging properties of the Li-ion battery.**

GB  
D  
F  
E  
I  
J  
KR  
CH

# DETAILED PARTS DESCRIPTION



MAIN UNITS	ACCESSORIES FOR MOUNTING ON H/BAR	ACCESSORIES FOR MOUNTING ON HELMET
<b>1. Light Unit</b> (#TMS-SP68) 1-1 Light Body 1-2 Power-Controller 1-3 Battery Pack Connecting Plug 1-4 M3 bolt 1-5 Handlebar Bracket	<b>4. Triangle Rubber Pad</b> <b>5. Rubber Strap Unit</b> 5-1 Rubber Strap x 2 (for $\varnothing$ 22.2~ $\varnothing$ 25.4) 5-2 Rubber Strap x 2 (for $\varnothing$ 25.4~ $\varnothing$ 31.8)	<b>9. HELMET LIGHT BRACKET Unit</b> (#TMS-SP36) 9-1 Light Holder 9-2 Helmet Band 9-3 Velcro Strap x 2 pcs
<b>2. Battery Pack</b> (#TMS-SP67) 2-1 Socket 2-2 Battery with Velcro Strap 2-3 Rubber Pad	<b>6. Cable Unit</b> 6-1 Extension Cable 6-2 Socket 6-3 Connecting Plug	<b>10. Cable Unit</b> 10-1 Extension Cable 10-2 Socket 10-3 Connecting Plug
<b>3. Charger</b> 3-1 Power Cord 3-2 Battery Charger (#TMS-SP69) 3-2a Socket 3-2b Battery Pack Connecting Plug	<b>7. BATTERY LIGHT BRACKET</b> <b>8. Adjusting Nut (Additional)</b>	

# POWER AND SAFETY TIME RESERVE TANK INDICATORS

Run-time reference: 3 hours at 10W in fully-charged condition.

In order for the battery pack to determine the correct light unit, the battery must be securely connected to the light unit before being turned on. Press and hold the power controller for 3 seconds to turn on the light. Choose your desired power level by pressing the power controller.

Mode	Power Level	LED	Total Run Time
1	10 W	Blue	3 hrs.
2	5 W	Green	6 hrs.
3	Blinking	Red	24 hrs.

\* Standard Operating Temperature: 15°C~25°C (59°F~77°F)

**Note:**

- In case light does not turn on, retry turning on the light.
- If the ambient temperature is extremely high or low (even within the operating temperature range), the operating time may be shorter than the standard time due to characteristics of the battery.

# POWER AND SAFETY TIME RESERVE TANK INDICATORS

**Power Controller**

**BLUE**

10W App. 180 min

Blinking App. 1 min  
Blinking 3 times

**RED**

2.6W S.T. Reserve App. 30 min

Blinking App. 1 min  
Blinking 6 times

Shut off

**Total Burn Time at 10W**  
**3.5 hours**

**GREEN**

5W App. 360 min

Blinking App. 1 min  
Blinking 3 times

**RED**

2.6W S.T. Reserve App. 30 min

Blinking App. 1 min  
Blinking 6 times

Shut off

**Total Burn Time at 5W**  
**6.5 hours**

**RED**

Blinking App. 1410 min

2.6W S.T. Reserve App. 30 min

Blinking App. 1 min  
Blinking 6 times

Shut off

**Total Burn Time at 2.6W**  
**24 hours**

**Note:**

The light body will be extremely hot in 10W mode. If the temperature of light body has been 90°C, the light will turn to 5W mode automatically after blinking 6 times. Press the power-controller twice to return to 10W mode.

**DON'T TOUCH**

The light body is extremely hot in 10W mode and may cause bodily injury if touched.

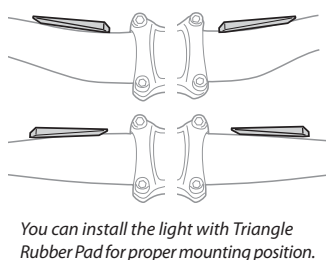
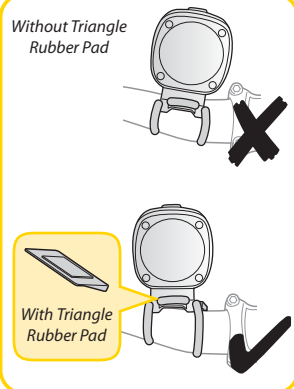
# MOUNTING INSTRUCTIONS

## MOUNT ON HANDLEBAR

### 1. Mount Battery on Stem



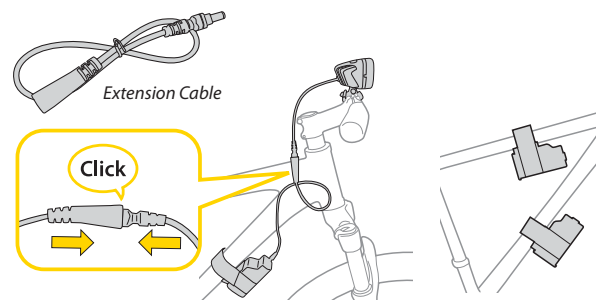
### 2. Mount Light on HandleBar



## WARNING

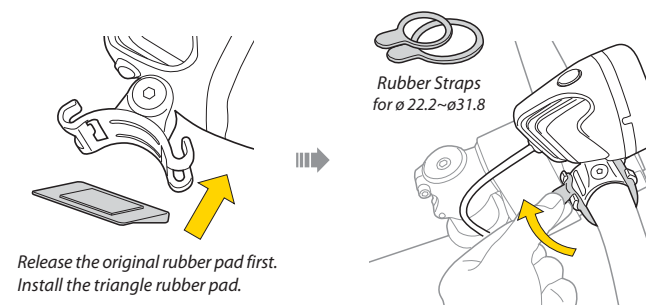
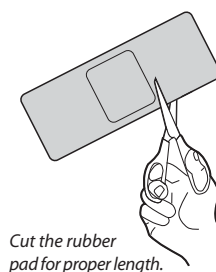
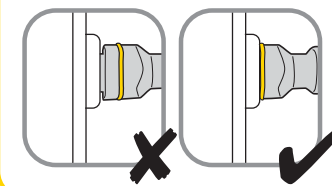
- Fits stem lengths > 80mm
  - NOT for adjustable stem
  - NOT for the angle of stem < 90°
- 

## OPTIONAL MOUNTING POSITION FOR BATTERY

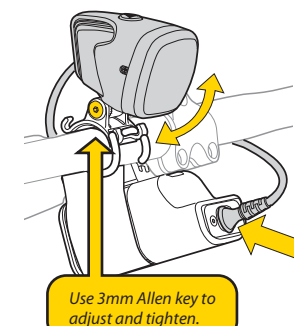


## WARNING

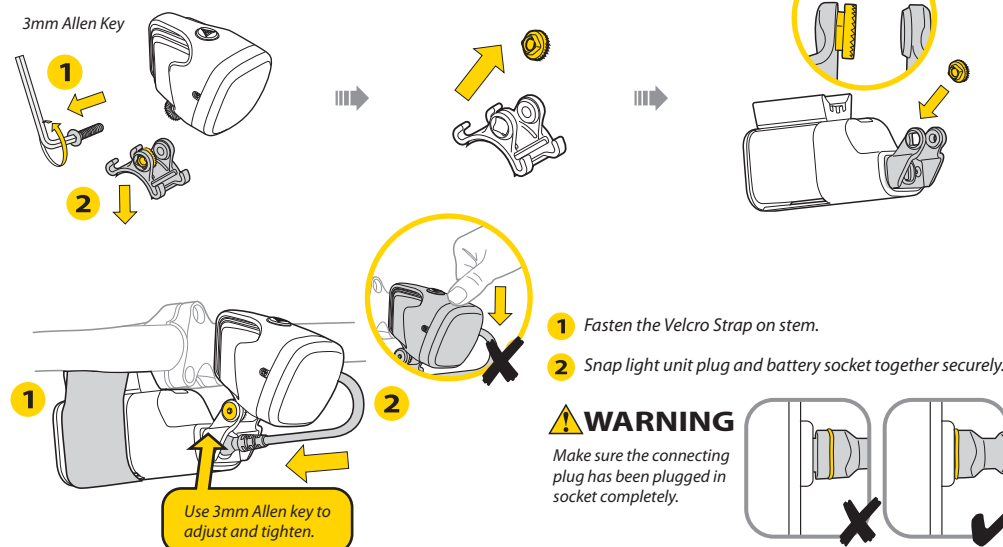
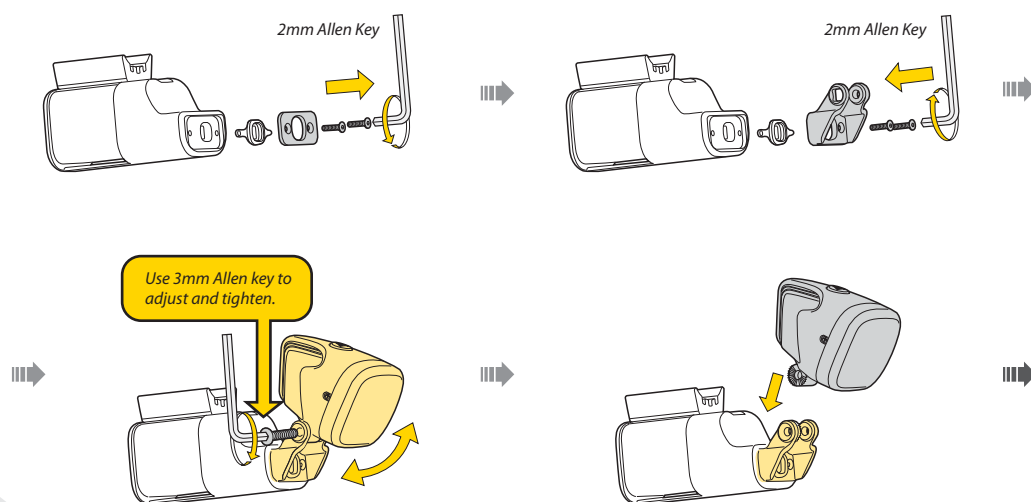
Make sure the connecting plug has been plugged in socket completely.



Rubber Straps for ø 22.2~ø31.8

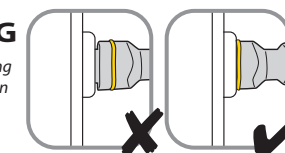


## MOUNT ON BATTERY



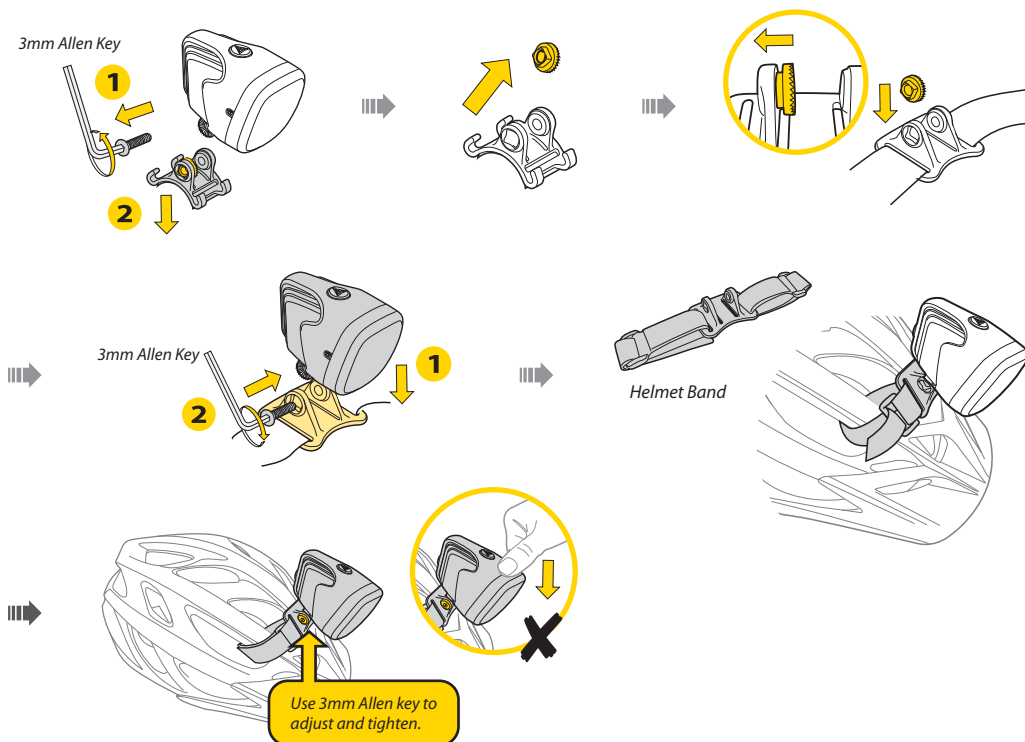
## WARNING

Make sure the connecting plug has been plugged in socket completely.





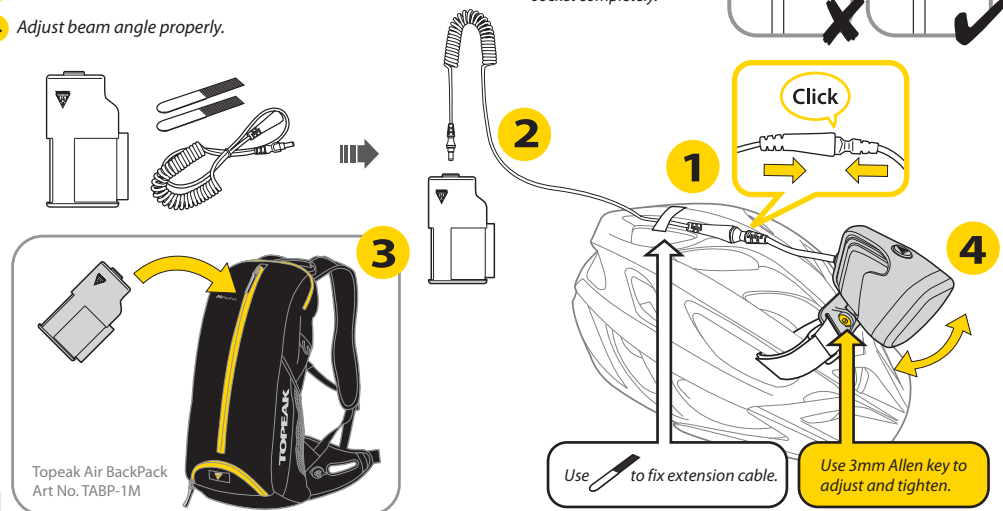
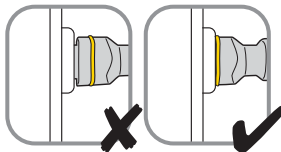
## Install Light Unit



## Main Unit Installation

- 1 Snap light unit plug and extension cable socket together securely.
- 2 Snap extension cable plug and battery socket together securely.
- 3 Put Battery Pack in backpack or in a pack.
- 4 Adjust beam angle properly.

**WARNING**  
Make sure the connecting plug has been plugged in socket completely.

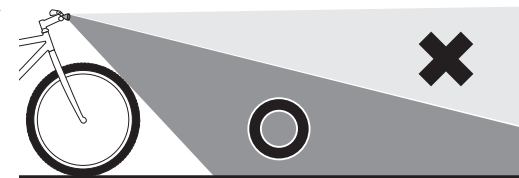


## BEAM ANGLE ADJUSTMENT

Switch on light in darkened conditions on a flat surface and adjust the beam angle vertically to desired position. It can also be pivoted 15° laterally. To adjust beam, loosen the adjusting bolt. Position light unit to reach the desired beam angle and re-tighten the bolt securely.

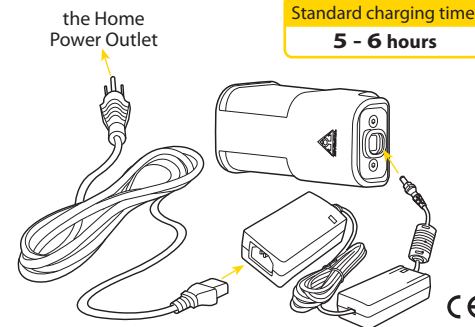


**In addition to its high brightness, the beam is widely diffused. If you use this light on public roads, be sure to adjust the angle downward so as not to blind oncoming traffic.**



## BATTERY PACK CHARGING

1. Be sure battery charger input voltage is correct.
2. Connect power cord to battery charger and battery charger plug to battery pack before connecting to home power outlet.
3. The battery charger LED will be RED during charging.
4. The battery charger LED will turn GREEN when battery is fully charged.
5. The battery charger LED will not illuminate if the charger is faulty.
6. Disconnect the battery charger power cable from home power outlet when the battery is removed.
7. It is normal for the battery charger and battery to become hot during charging. Please use caution when charging battery.
8. After battery is fully charged, unplug the battery charger.



### Note:

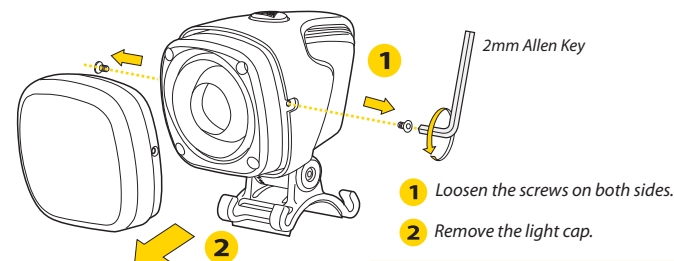
- If the light fails to turn on after several tries, charge the battery to full capacity.
- The standard charging time is 5 to 6 hours. (The charging time and operating time may vary depending on ambient temperature.)
- Li-ion batteries may take 3 to 5 charging cycles to attain full capacity.
- If the battery does not give the proper run time after being fully charged, replace with a new battery pack.



## WARNING

- Do not place battery charger in a damp or dusty location or areas affected by oil fumes or steam.
- Do not open battery charger case.
- Battery charger is for indoor use only.
- Avoid electrical shock.
- Do not leave battery connected to charger over 48 hours continuously.

## LIGHT BODY MAINTENANCE



**WARNING**  
Before removing light cap mounting screws, make sure bulb and light body are cool.

### Note:

If the light body or parts become dirty, gently clean with a soft towel using mild soap and water. Never use harsh chemicals to clean the lighting system as damage to housings will occur.



## WARNING

Never remove lens screws.

